

## NURSING TEAM

A Tabitha Hospice nurse will make visits according to specified needs. They will manage the care plan as it relates to current and future goals and work closely with Clients, their families and physicians to monitor and treat symptoms as they occur. The nurse will keep everyone involved well informed of any changes or concerns throughout the process.



**Rosie  
Dinan, RN**



**Donna  
Melnick, RN**

*(Weekend & Evening)*



**Cokey  
Mireles, RN**



**Lynn  
Pethoud, RN**



**Lexi Rozendal, RN**



**Ashley  
Ruzicka, RN**

*(Weekend & Evening)*



**Traci  
Rystrom, RN**

*(Weekend & Evening)*



**Jessica  
Schlegel, RN**



**Bethany  
Schmit, RN**



**Amber  
Shafer, RN**



**Elizabeth Smith, RN**  
*(Weekend & Evening)*



**Jeanne  
Wilke, RN**



**Melissa  
Flynt, RN**  
*(QA RN Auditor)*

## HOSPICE AIDES

Hospice aides may be part of the care plan and can assist in multiple ways. As certified caregivers, they are available to help with personal care needs, light housekeeping and companionship.



**Tina  
Back**



**Michelle  
Carlson**



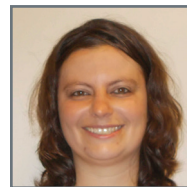
**Wanda  
Driewer**



**Sheila  
Goebel**



**Kasey  
Nicolaus**



**Brandi  
Schmid**



**Kelly  
Vogt**



**Kiara  
Waegli**

## ON-CALL TEAM MEMBERS

As a benefit of Tabitha Hospice, we are proud to offer a team of support available 24 hours a day, seven days a week.

If you have questions or concerns, a simple call to our hospice team enables you to get the answers you need, as you need them.