

NURSING TEAM

A Tabitha Hospice nurse will make visits according to specified needs. They will manage the care plan as it relates to current and future goals and work closely with clients, their families and physicians to monitor and treat symptoms as they occur. The nurse will keep everyone involved well informed of any changes or concerns throughout the process.



**Staci
Dunnigan, RN**



**Ashley
Beecher, RN**



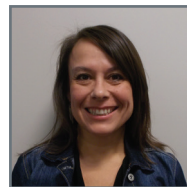
**Sally
Heasty, RN**



**Matt
Hollamon, RN**



**Jamee Hose,
RN**



Angela Kiner, RN
(Weekend & Evenings)



**Kayla
Lattimore, RN**



**Tiffany
Marquis, RN**



**Megan
McLaughlin, RN**
(Weekends)



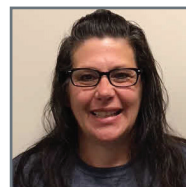
**Stephanie
Meyer, RN**
(Weekend & Evenings)



**Suzie Temple,
RN**



**Melissa
Tucker, RN**



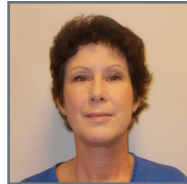
**Lisa
Wheeler, RN**

HOSPICE AIDES

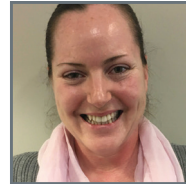
Hospice aides may be part of the care plan and can assist in multiple ways. As certified caregivers, they are available to help with personal care needs, light housekeeping and companionship.



**Jaela Kowalewski-
Betts**



**Rose
Jarzynka**



**Jennifer
Pierce**



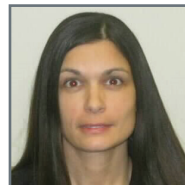
**Lesley
Schwartz**



**Stacey
Sheldon**



**Sheila
Shinn**



**Tiffany
Twiss**

ON-CALL TEAM MEMBERS

As a benefit of Tabitha Hospice, we are proud to offer a team of support available 24 hours a day, seven days a week. If you have questions or concerns, a simple call to our hospice team enables you to get the answers you need, as you need them.