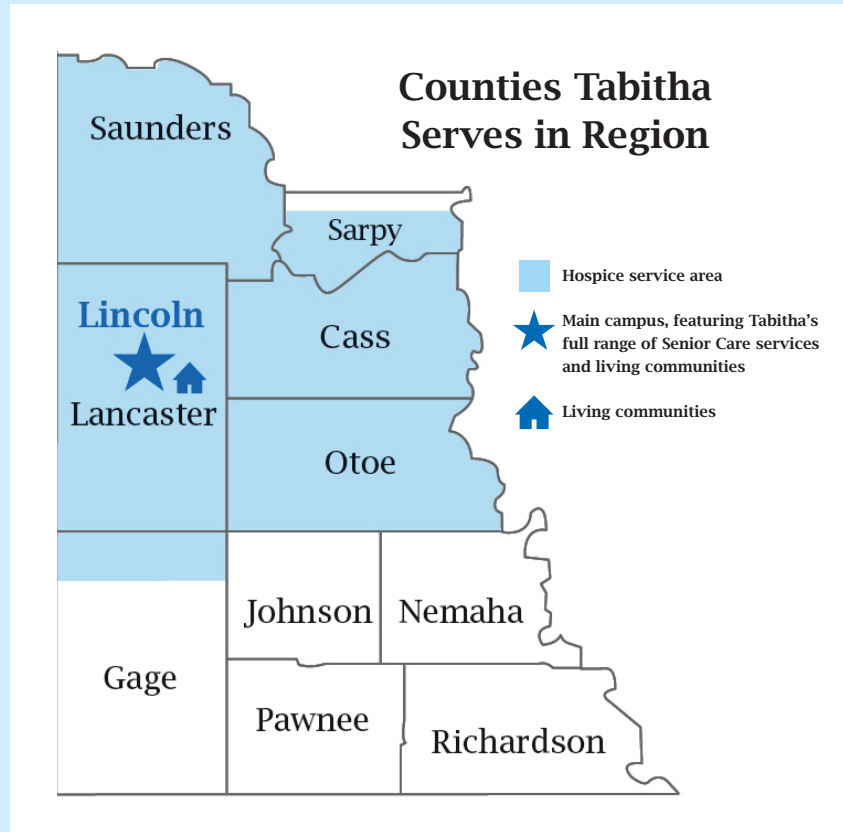


Lincoln | Nebraska City Area

4720 Randolph St.
Lincoln, NE 68510

402.486.8506
402.486.8590 (fax)



Your Tabitha Hospice Team

ADMINISTRATOR: Karen Cheesman, CBSW, 402.486.8506

NURSE: _____

SOCIAL WORKER: _____

SPIRITUAL SUPPORT: _____

BEREAVEMENT COORDINATOR: _____

VOLUNTEER: _____

Tabitha complies with applicable Federal civil rights laws and does not discriminate on the basis of race, color, national origin, age, disability, or sex.

Tabitha cumple con las leyes federales de derechos civiles aplicables y no discrimina por motivos de raza, color, nacionalidad, edad, discapacidad o sexo.

Tabitha tuân thủ luật dân quyền và không phân biệt đối xử dựa trên chủng tộc, màu da, ngôn ngữ, quốc gia, giới tính, khuyết tật, hoặc các đặc tính khác.



Welcome



It is my privilege to welcome you to the Tabitha Hospice family and to express our team's deepest appreciation for entrusting us with your end-of-life care.

As the first and most experienced provider of hospice care in the state of Nebraska, we provide the best clinical care, symptom control and pain management to individuals wherever they call home: a residence, senior living community or in Lincoln at Tabitha's residential-style Journey House, dedicated to hospice care. We also offer unparalleled comfort along with spiritual and emotional support.

At Tabitha Hospice, the end of life is a time not to be mourned, but celebrated. Our passion is in helping individuals create lasting memories with the people they love most, to relish the simple pleasures in life and to build a legacy that continues for generations.

In addition to your Tabitha Hospice team, please feel free to contact me any time at 402.486.8506 with any questions or needs.

In service,

Karen Cheesman

Karen Cheesman, CBSW, Administrator
Tabitha Hospice

LEADERSHIP

Our Tabitha Hospice leadership team is here to ensure that our team members meet your needs and provide hospice care that exceeds industry standards.



Administrator
Karen Cheesman,
CBSW



Director of Clinical Services
Jessica Garza, RN, BSN



Education & QAPI Coordinator
Cindy Lee,
RN, CHPN



Patient Care Coordinator
Kim Pahl,
MSN, RN



Admissions/Patient Care Coordinator
Kimberly Robinson,
RN

HSP_BOOK_0005_005_240308.P



Your Hospice Team

MEDICAL DIRECTOR

Our medical directors are the state's foremost experts on hospice care. They are passionate about helping individuals make the most of their end-of-life journey. Working with the clients' physicians, medical directors develop client care plans and provide ongoing review on Tabitha Hospice care. If necessary, they can intervene to ensure appropriate treatment conforms to the care plan and falls within established hospice care guidelines.



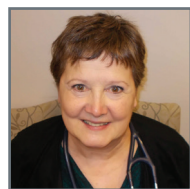
Dr. Kevin Reichmuth
Medical Director



Dr. Heather Fago
Associate Medical Director



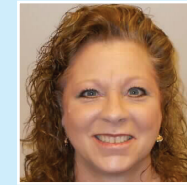
Dr. Jeffrey Marple
Associate Medical Director



Mary Christensen,
DNP, APRN-NP

HOSPICE NURSE PRACTITIONER TEAM

With advanced skills and knowledge of hospice and end-of-life care, our nurse practitioner can assess clients, make appropriate diagnoses and provide treatment recommendations to the team. The nurse practitioner also work very closely with the medical community to ensure Tabitha Hospice clients have a continued level of care without leaving their homes, and is also responsible for ensuring that Medicare benefit eligibility regulations are met.



Jennifer Stokes



PJ Wilksen

ADMINISTRATIVE SUPPORT

Every day, there are individuals working behind the scenes to ensure the care delivered is nothing less than excellent. Our administrative support team members help with managing medical records, answering questions and everything in between.

SOCIAL WORKERS

Tabitha Hospice clients are assigned a social worker. This individual can access community resources, plan advance directives and help clients and families cope with the emotions they may be experiencing during the hospice process.



Tesla Babbitt,
CBSW



Kadi Holmberg,
LICSW



Jayme John,
CBSW



Linnea Jones,
CBSW



Angie Koenig,
CBSW



Kara Hillhouse



Michael Melchizedek



Juanita Steenbakkers

SPIRITUAL SUPPORT

Tabitha's chaplains provide spiritual and emotional support throughout the hospice journey.

VOLUNTEERS

Volunteer support is part of the hospice benefit. If volunteers are included in the plan of care, the volunteer team will work directly with the social worker and nurse to find the right volunteer. Volunteers can provide a friendly face, companionship, light cleaning and housekeeping, or even just listening support. Our Veteran-to-Veteran program and pet therapy are other services provided by our volunteer team.



Christine Nelson



Jason Padilla



Juanita Steenbakkers

BEREAVEMENT

Bereavement and grief are normal, yet at times emotional, aspects of the hospice journey. Bereavement support is offered to all loved ones for 18 months following hospice care. Grief support groups, supportive mailings as well as personal conversations are all included aspects of Tabitha Hospice bereavement support.